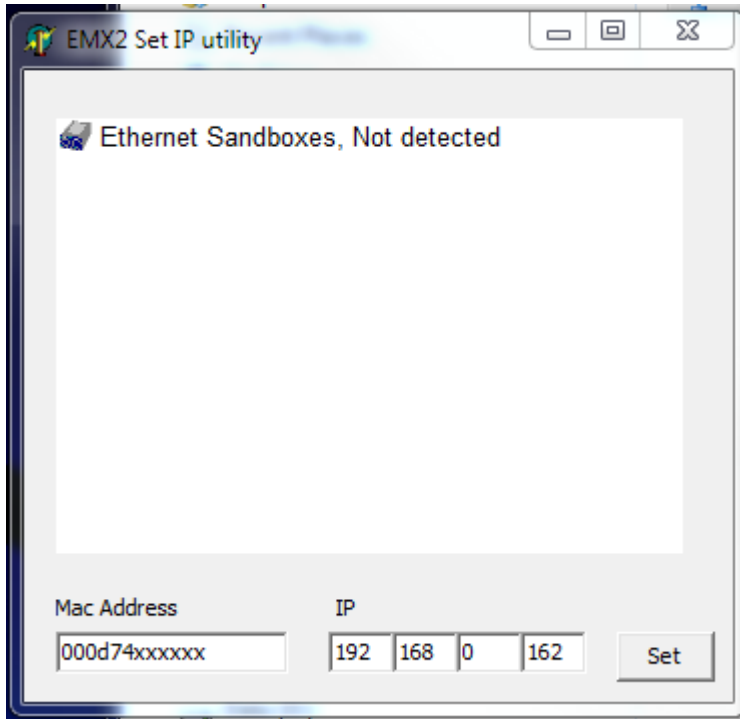


EMX IP Recovery

If an EMX box becomes undiscoverable on the network, it may be that the IP address has been set to an invalid value. To reset the IP settings to the default, follow these steps:

1. Connect the EMX2/10 directly to your computer with a “crossover” cable, or via a single switch with standard cables.
2. Run EmxIpRecovery.exe



3. Enter the MAC address of the EMX2/100. The MAC address is a 12 character hexadecimal number beginning with 000D75. It is printed on a label on the bottom of the unit. Do not enter spaces or colon symbols.
4. The default IP of the EMX2/10 as shipped from the factory is 192.168.0.162. If desired, you may set the IP to accommodate your local network.
5. Press Set.

In a few seconds the EMX2/10 should be detected in the display.